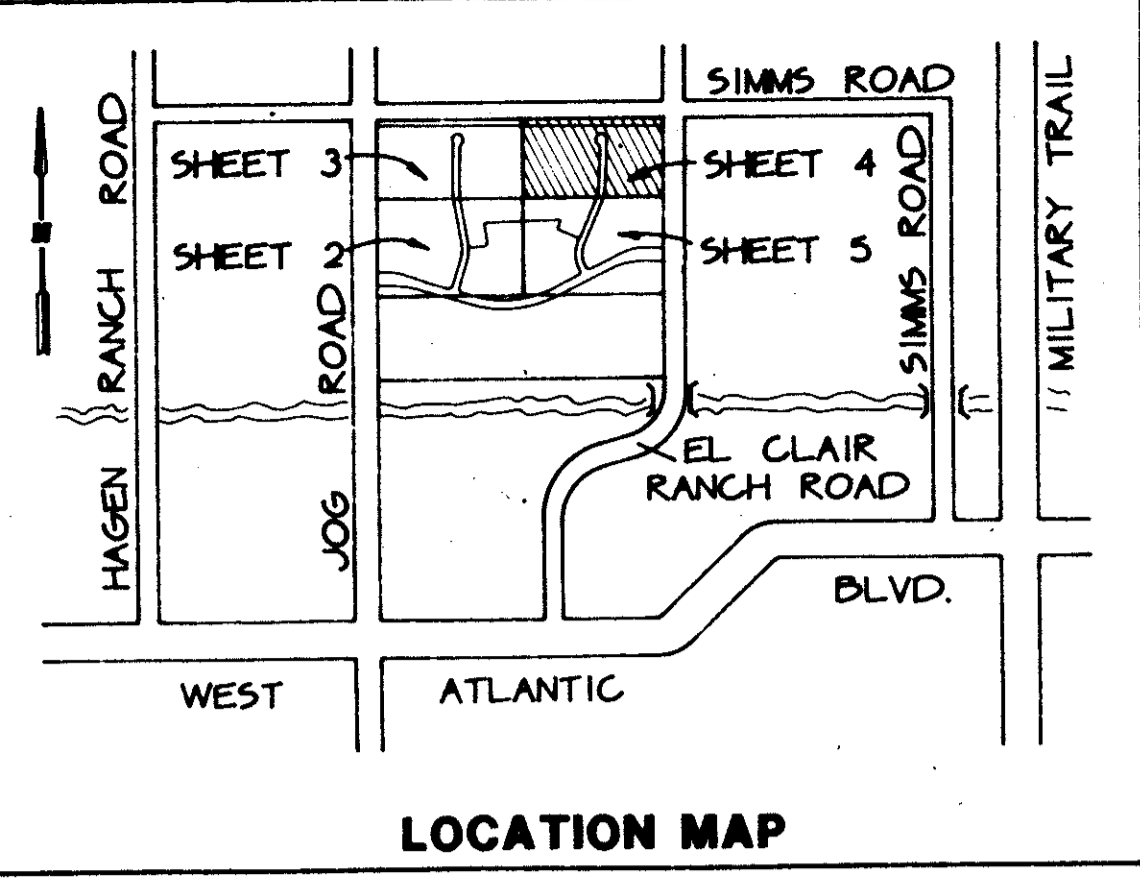


HUNTINGTON POINTE NORTH

A REPLAT OF A PORTION OF TRACT A OF HUNTINGTON POINTE AS RECORDED IN PLAT BOOK 61, PAGES 153 THROUGH 155 OF THE PUBLIC RECORDS OF PALM BEACH COUNTY, FLORIDA IN SECTION 15, TOWNSHIP 46 SOUTH, RANGE 42 EAST PALM BEACH COUNTY, FLORIDA

THIS INSTRUMENT PREPARED BY JAMES E. PARK, P.L.S.
WILLIAMS, HATFIELD & STONER, INC. - ENGINEERS PLANNERS SURVEYORS
1325 SOUTH CONGRESS AVENUE, SUITE 118, BOYNTON BEACH, FLORIDA 33426

SHEET 4 OF 5



PLAT NO. 5 OF DELRAY VILLAS
P.B. 42, PGS. 114-117

PLAT NO. 4 OF DELRAY VILLAS
P.B. 40, PGS. 27-30

☪ SIMMS ROAD

NORTH LINE OF SECTION 15

85' L.W.D.D. CANAL L-32 R/W
PER O.R.B. 5581, PAGE 1529

N89°09'06"E 2584.45' (TOTAL)

LIMITS OF PLAT

P.O.B.

HUNIWICK TERRACE

TRACT A

TRACT F

TRACT P-5

TRACT P-3

WALDWICK CIRCLE

TRACT D

TRACT P-3

WALDWICK CIRCLE

☪ EL CLAIR RANCH ROAD

WATER MANAGEMENT TRACT

(TO BE MAINTAINED BY THE HUNTINGTON POINTE ASSOCIATION, INC., ITS SUCCESSORS AND ASSIGNS)

ROYAL VISTA DRIVE

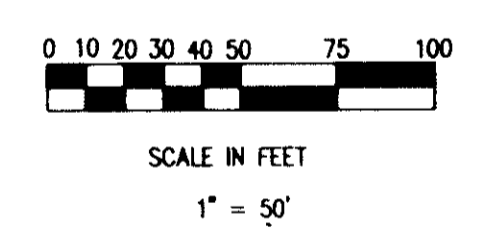
PLAT NO. 1, DELRAY VILLAS
P.B. 37, PGS. 4-7

Allocation # 427-001

0427-004

TRACT A

HUNTINGTON POINTE NORTH 65/64



MATCH LINE - SEE SHEET 3 OF 5

MATCH LINE - SEE SHEET 5 OF 5

SUBDIVISION HUNTINGTON POINTE NORTH
PAGE 64
DATE 05/10/98
BY J.E.P. / J.H.S. / J.S.